

# Measles Cases and Outbreaks

Centers for Disease Control and Prevention;  
World Health Organization

## Measles Cases in 2020

As of January 31, 2020, there have been 5 confirmed cases of measles in 5 states.

## Measles Cases in 2019

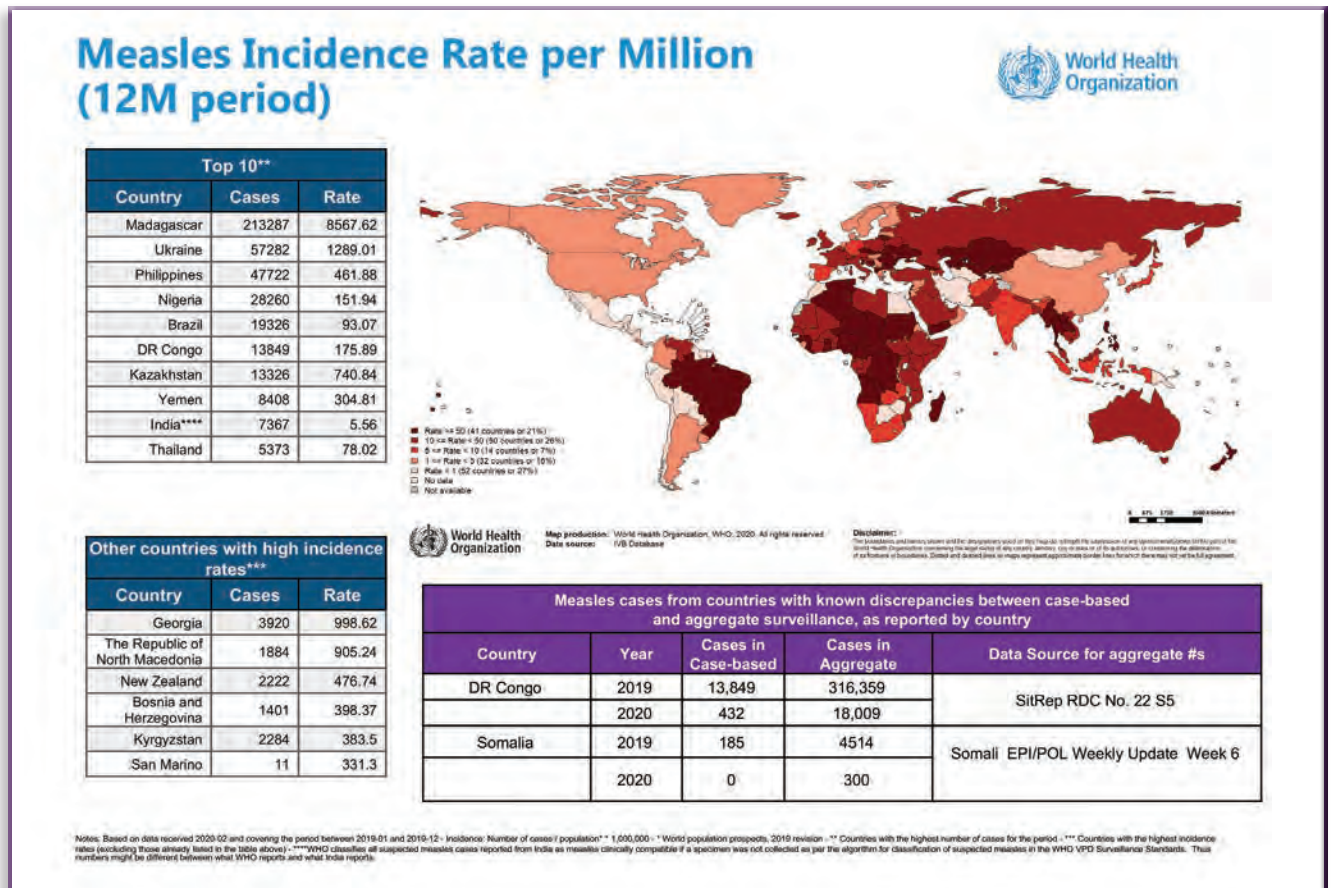
- From January 1 to December 31, 2019, 1,282 individual cases of measles were confirmed in 31 states. Of these cases, 128 were hospitalized and 61 reported having complications, including pneumonia and encephalitis.

- This is the greatest number of cases reported in the U.S. since 1992. More than 73% of the cases were linked to recent outbreaks in New York. The majority of cases were among people who were not vaccinated against measles. Measles is more likely to spread and cause outbreaks in U.S. communities where groups of people are unvaccinated.
- All measles cases were caused by measles wild-type D8 or B3.

## NUMBER OF MEASLES CASES REPORTED BY YEAR

2010	2011	2012	2013	2014	2015	2016	2017	2018	2019	Jan 2020
63	220	55	187	667	188	86	120	375	1282	5

Source: <https://www.cdc.gov/measles/cases-outbreaks.html>



Source: [https://www.who.int/immunization/monitoring\\_surveillance/burden/vpd/surveillance\\_type/active/measles\\_monthlydata/en/](https://www.who.int/immunization/monitoring_surveillance/burden/vpd/surveillance_type/active/measles_monthlydata/en/)



Spring 2020  
Volume 20, Edition 1

# JSOM

JOURNAL of SPECIAL OPERATIONS MEDICINE™



THE JOURNAL FOR OPERATIONAL MEDICINE AND TACTICAL CASUALTY CARE

